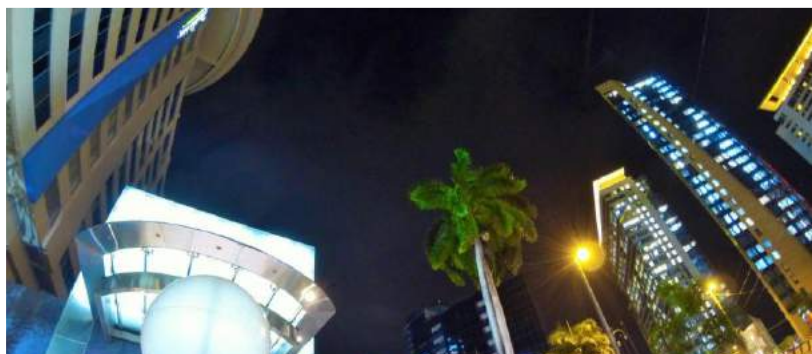


arrival is the best departure



Hotel Features

Surrounded by breathtaking views of Port of Spain, the Northern Range and the Gulf of Paria, the Radisson Hotel Trinidad is a relaxing oasis which boasts of superior amenities as well as the city's largest guest rooms. Its unbeatable location in the heart of the city, makes it ideal for business and leisure travelers wishing to be in close proximity to the financial, business and shopping districts of Trinidad.

With onsite facilities including a 24 hour business centre, fitness centre and an outdoor pool, the hotel also boasts of its all day restaurant the Olympia Restaurant and the 360 Degrees Restaurant which is currently open for Sunday Brunch and Night Dinner from Tuesday through Saturday. Happy Hour is available daily at our Maple Bar & Lounge offering live entertainment on Wednesdays thru Fridays.

Things to Do:

- Carnival
- Emperor Valley Zoo and Botanical Gardens
- Caroni Bird Sanctuary
- Maracas Beach
- Chaguaramas Golf Course
- Nightlife

Guest Room Amenities:

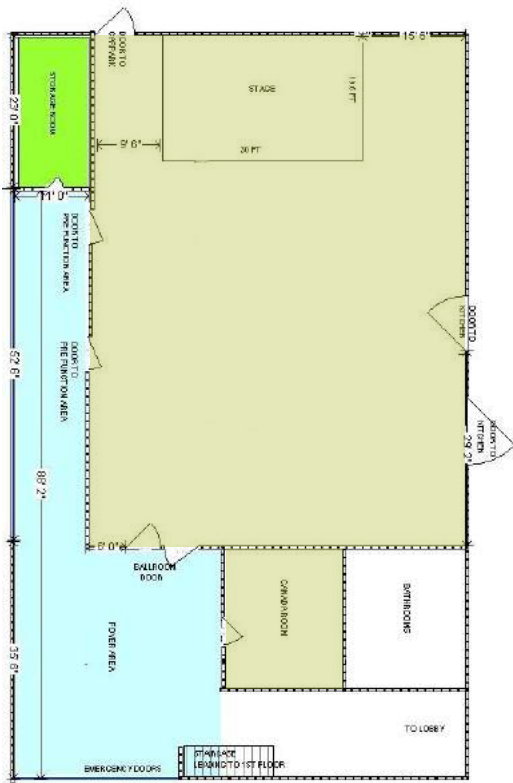
- Largest guest rooms in Port of Spain
- 37" LED televisions
- Complimentary Wi-Fi internet access
- Individually controlled air-conditioning units
- Rituals bath amenities
- In room safe

Meeting facilities and services

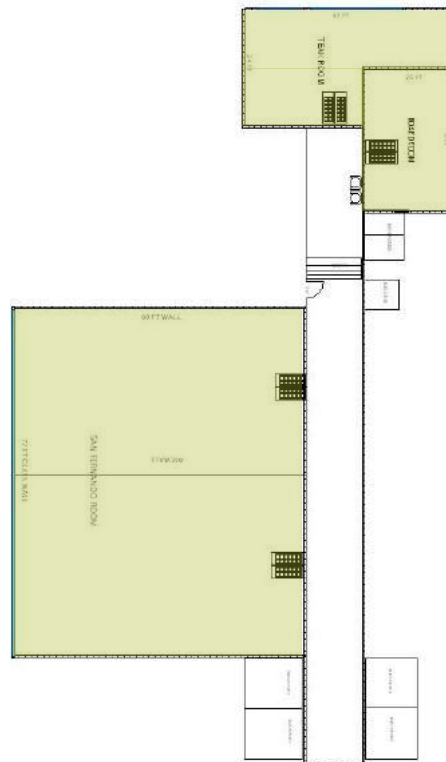
- 9 flexible meeting and function rooms ranging from 567 to 6,030 square feet
- Festival Ballroom accommodates up to 550 persons theatre style
- Audio visual and equipment rental
- On-site meeting director
- Secured parking facilities
- Custom designed on-site catering

To find out more, visit Radisson.com/trinidad or call 1-868-625-3361-6

Radisson Hotel Trinidad
Wrightson Road
Port of Spain, Trinidad, W.I.
+1 (868) 625-3366
sales@rposthotel.com



Ground



1st Floor



12th Floor

Event Rooms	Location	Dimensions (LxW)	Area (Sq.ft.)	Banquet	Theatre	Classroom	Boardroom	U-Shape
Festival Ballroom	Ground	76' x 56'	4256	350	525	220	100	100
Canada Room	Ground	31' x 16'	496	20	35	12	16	14
San Fernando Room	1st Floor	60' x 36'	2160	150	170	100	50	45
Teak Room	1st Floor	33' x 24'	792	60	100	40	30	25
Boardroom	1st Floor	30' x 20'	600				14	
Calypso Lounge	12th Floor	71' x 37'	2627	175	225	100	70	70
T&T North	12th Floor	38' x 26'	988	70	100	40	30	35
Chaconia	12th Floor	24' x 22'	528	40	50	24	16	16
Bougainvillea	12th Floor	24' x 18'	432	30	40	20	16	14
360 Restaurant	(Special Conditions Apply)							

Each Meeting Room comes equipped with the following on a Complimentary basis:

- One Microphone (wired)
- One Podium
- One Flipchart with Marker